

Expanding Eastcroft

A new vision for Eastcroft, recovering renewable energy from waste to support the sustainable regeneration of Nottingham

Welcome

Today's public exhibition is all about Waste Recycling Group's plans to extend the Eastcroft Energy-from-Waste (EfW) Facility. Expanding Eastcroft will enable it to deal with a larger amount of Nottingham's waste in a more environmentally friendly way, converting it to heat and power instead of sending it to landfill.

When designed in the early 1970s it was envisaged that the Eastcroft plant would be extended to accommodate additional treatment. Government policy is now suggesting that this should be done soon.

A previous planning application was refused by Nottingham City Council last September. The improved plans presented today aim to tackle the reasons why the last application was refused. A new planning application will be submitted very shortly but we want to give you the chance to view and comment on the plans first.

Getting in Touch

If you have any comments, questions or suggestions about Eastcroft and our expansion plans, we want to hear from you.

Call us on 0845 601 5432

Email us at info.eastcroft@wrg.co.uk

Write to us at FREEPOST LOCAL VIEWS

Visit our website at www.wrg.co.uk/eastcroft



Drawing of the proposed new Eastcroft plant.



Background

About Eastcroft

The Eastcroft Facility generates energy from waste by taking 150,000 tonnes of rubbish from local homes and businesses every year and burning it to produce electricity and steam for local use. The diagram on this board shows how this happens. The energy and steam produced is used to provide power and heating for thousands of homes and buildings in the City.

This rubbish brought to Eastcroft is what is leftover after recycling. This rubbish would otherwise be buried in landfill sites outside the City.

Eastcroft has been open over 30 years and in that time it has taken over 4 million cubic metres of rubbish that would have been sent to landfill and used it to generate renewable energy. This is a greener way of dealing with the large amounts of rubbish that we all produce. Eastcroft was designed to grow in the future but it will continue to operate for another 30 years, with or without its expansion.

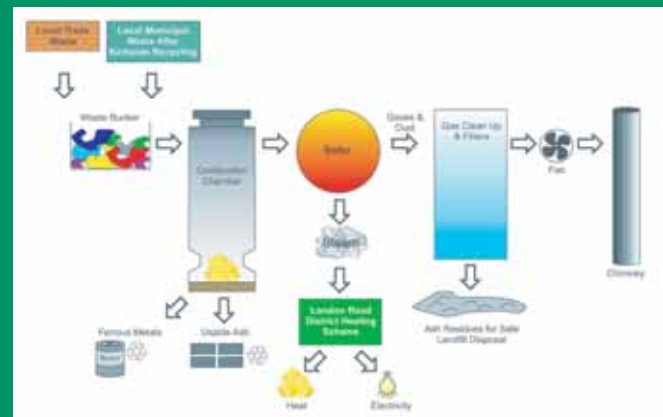
The Old Application

Eastcroft currently handles 150,000 tonnes of rubbish every year. WRG wants to expand Eastcroft so that it can handle an extra 100,000 tonnes every year.

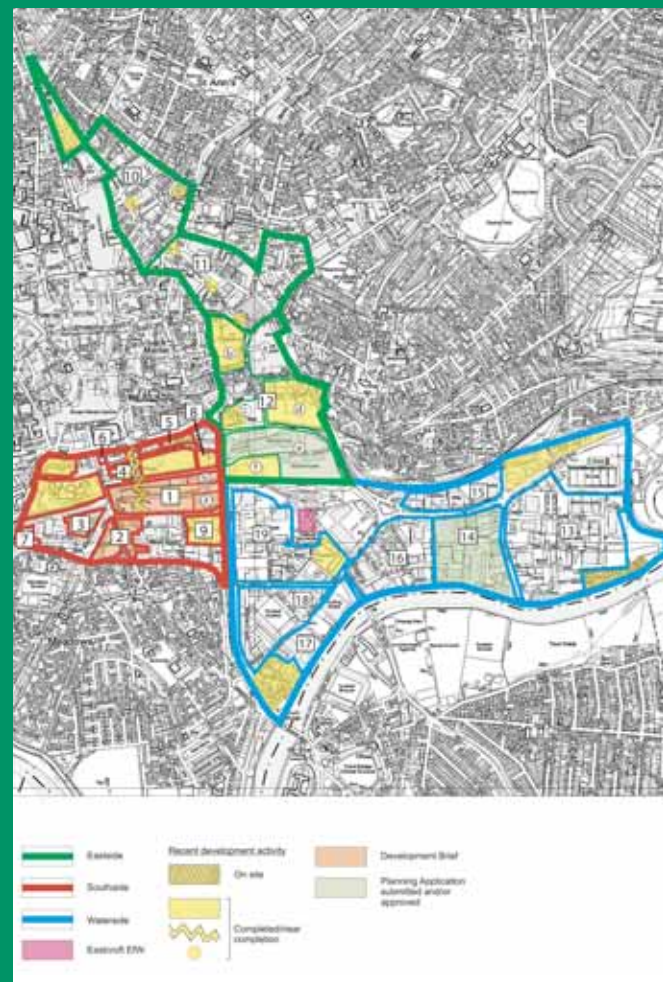
A previous planning application for this extension was refused permission by Nottingham City Council in September 2006, despite the Council's waste policies giving clear support for Eastcroft's expansion.

The reason that the Council refused the last application was that it was concerned about the impact of an expanded Eastcroft on neighbouring regeneration areas. However, the Eastcroft facility will be there for the next 30 years with or without this expansion. There is also an increasingly pressing need to expand Eastcroft's capacity to deal with Nottingham's waste and avoid landfill.

WRG wants to respond positively to the Council's decision. This is why WRG has withdrawn its appeal against the Council's decision. WRG has instead decided to submit a new planning application that will address the Council's concerns by ensuring that Eastcroft does more to support local regeneration.



EFW Process Plan



Regeneration Areas Map showing site



The New Planning Application

What's Changed?

The new planning application is identical to the old planning application in all technical matters. It is the same size as the previous application; increasing Eastcroft's capacity from 150,000 to 250,000 tonnes a year with a 'third line'.

Eastcroft was designed to accommodate a 'third line' expansion. As a result, just like the previous application, the expansion of Eastcroft will take up very little additional land on the site, as the plan on this board shows.

The potential impact on people and the environment, including traffic, noise and air quality, are unchanged and remain acceptable. The ways in which any such impacts will be managed and mitigated are also unchanged.

Eastcroft also already has a permit from the Environment Agency for the expansion of Eastcroft to 250,000 tonnes a year. In order to be awarded this permit, WRG needed to satisfy the Environment Agency that the expanded Eastcroft could be run to the required environmental standards, which includes meeting emission limits.

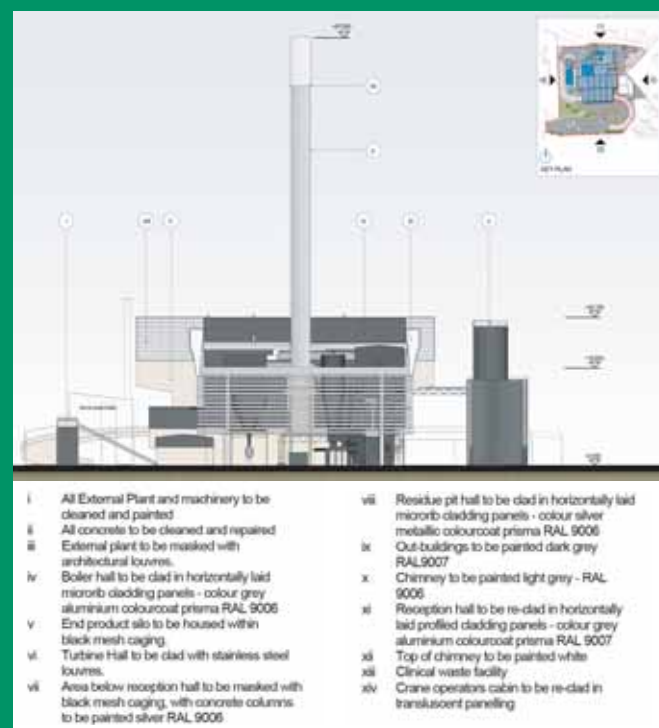
However, in looking again at the plans, WRG decided that much more could be done to improving Eastcroft's appearance and make it look a far more attractive building. As you will see on the following boards, some major architectural improvements are proposed that will transform how Eastcroft looks.

The Benefits

- Saving more of Nottingham's waste from being sent to landfill
- Recovering renewable energy from more of Nottingham's waste
- Supporting the extension of Nottingham's District Heating Scheme
- Helping the sustainable development of Nottingham City Centre
- Delivering a new architectural vision for Eastcroft



Proposed Site Plan



Proposed North Elevation

Why Expand Eastcroft?

The need to expand Eastcroft is more pressing than ever and it needs to happen quickly. Over 100,000 tonnes of commercial and industrial waste is currently disposed of in landfill sites outside the City when it could be treated at Eastcroft and used to recover energy. This confirms that there is a local need for an expanded Eastcroft.

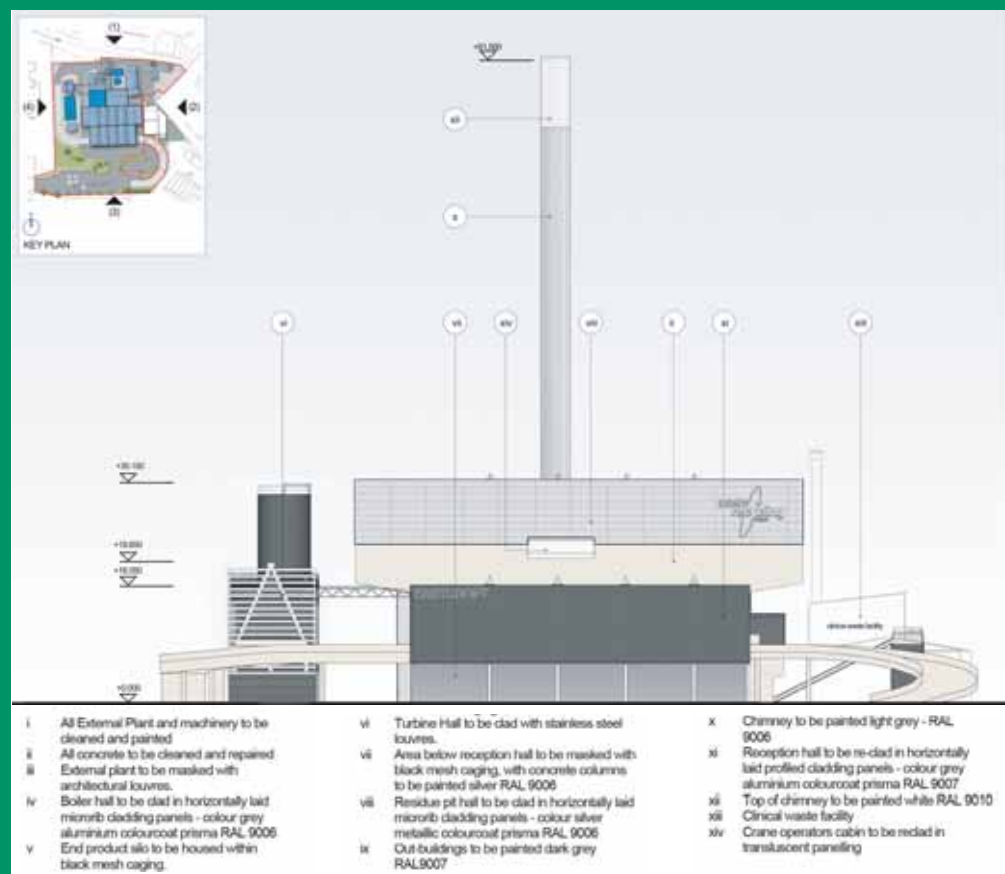
Expanding Eastcroft will also reduce the number of waste vehicles on the roads and the mileage travelled by waste leaving Nottingham to be landfilled outside the City.

Landfill is the least environmentally favourable option for waste disposal. The Government has also recently announced significant rises in landfill taxes. This will considerably increase the cost of landfill to the Council and to businesses.

Energy-from-Waste is a tried and tested technology. The Government's National Waste Strategy, published in May 2007, emphasised the important role of Energy-from-Waste as part of a sustainable approach to waste management, along with recycling and composting.

The Government's Waste Strategy wants to see an increase in the use of Energy-from-Waste. By 2020, the Government expects 25% of municipal waste to be used to generate energy, compared to 10% today.

By contrast, the Government expects business landfill waste to fall by 20% by 2010 compared to 2004.



Proposed South Elevation

In conjunction with efforts to reduce the amount of waste produced and to recycle as much as possible, Eastcroft has a vital role in play in managing the large volumes of waste produced in Nottingham by treating this waste as a resource from which energy can be recovered.

Generating Renewable Energy, Supporting Regeneration

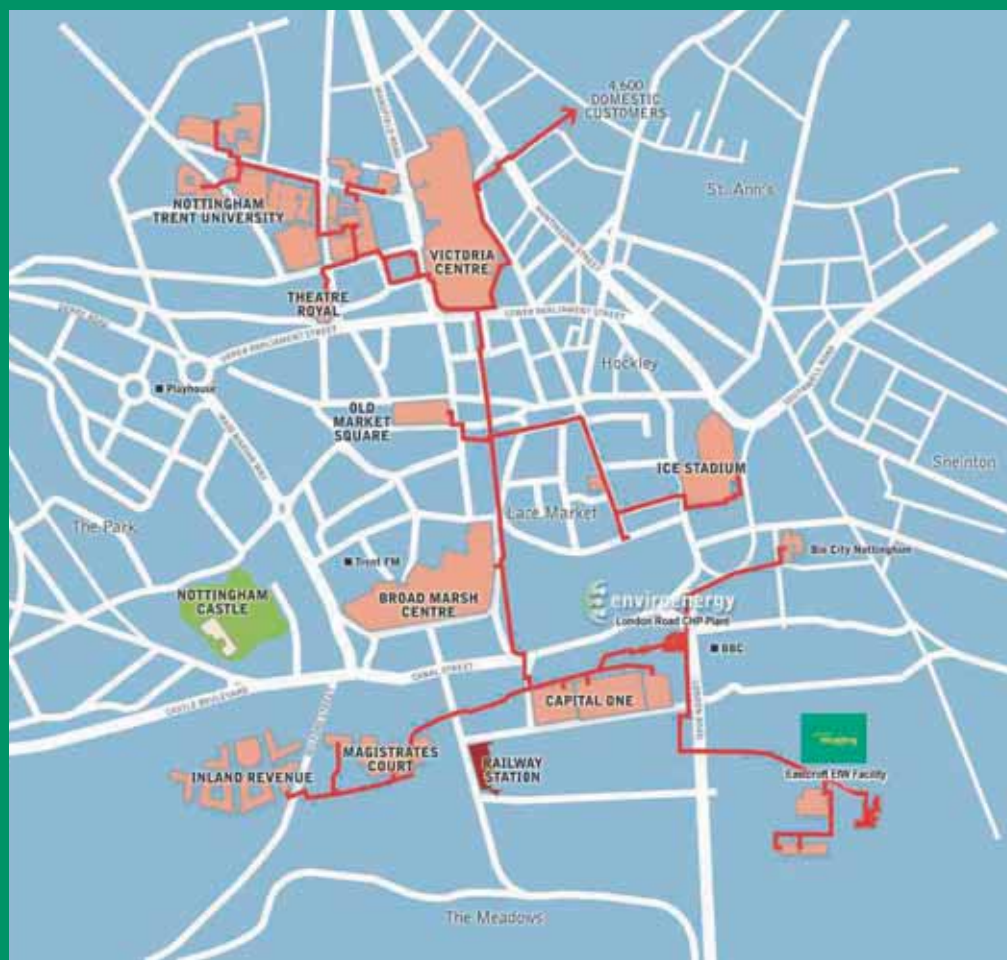
Nottingham is almost unique in the United Kingdom in having a District Heating Scheme that is powered by an Energy-from-Waste facility, which produces renewable energy and reduces the need for non-renewable fossil fuels. Sheffield is the only other city that shares this attribute.

The Government has recently confirmed its support for Energy-from-Waste with Combined Heat and Power – as at Eastcroft – as a source of renewable energy.

Nottingham's District Heating Scheme currently supplies over 4,600 homes and many of the largest buildings in the city centre, including the National Ice Centre, the Magistrates Courts and the University.

This places Nottingham in a group of leading European cities that have major district heating schemes running on Energy-from-Waste, such as Gothenburg, Malmo, Copenhagen, Stockholm and Vienna. Expanding Eastcroft will help to secure Nottingham's place among these leading cities when it comes to sustainable energy.

If Eastcroft is expanded, then the District Heating Scheme can also be extended, as more steam will be produced from Eastcroft. This potentially allows the District Heating Scheme to supply neighbouring development schemes in the Eastside, Northside and Waterside regeneration zones.



Existing District Heating Network

This would be a major sustainability achievement for Nottingham City Council, which recently declared that 10% of the energy needs of any new large developments need to be met from renewable sources. Renewable energy from Eastcroft fits the bill.

A New Architectural Vision for Eastcroft

Some improvements to Eastcroft's external appearance were proposed as part of the old planning application for Eastcroft's expansion. WRG has now decided to go much further to give Eastcroft a major facelift.

WRG has worked together with architects RPS Burks Green to create a new architectural vision for Eastcroft.

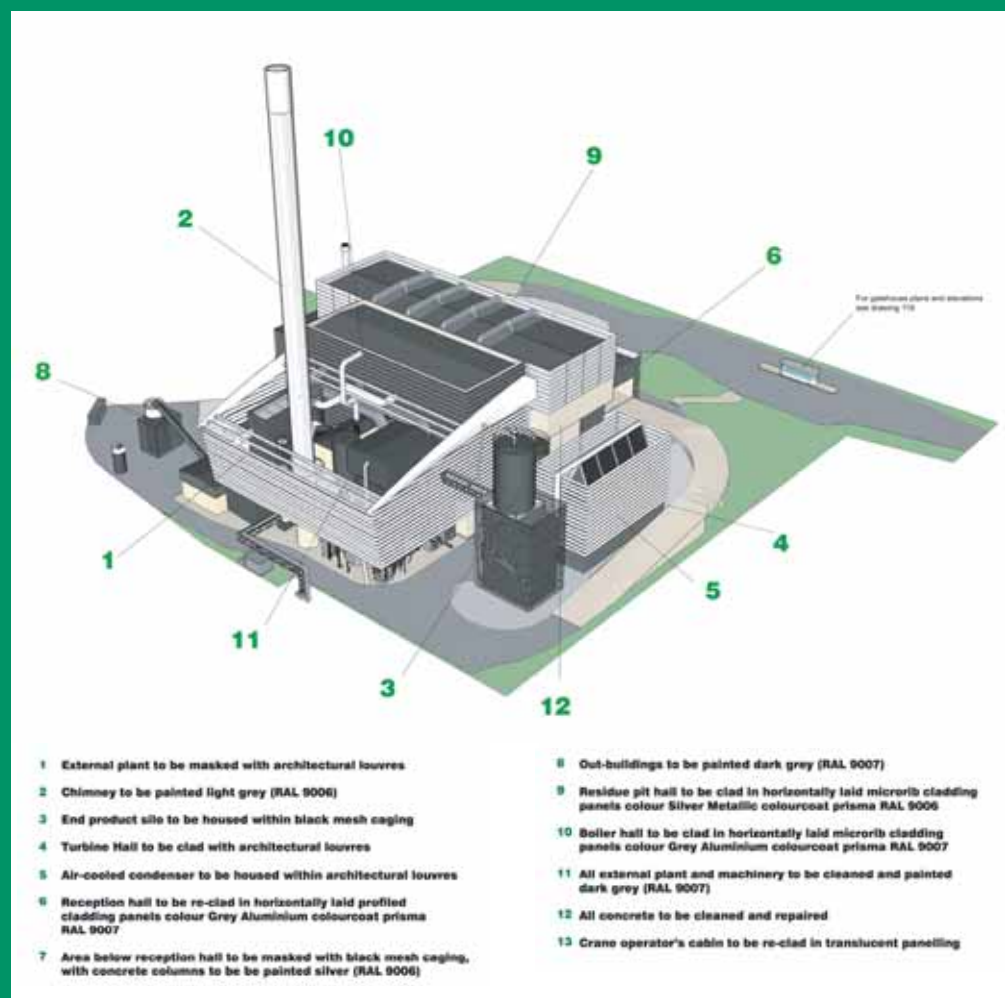
Based in Newark, RPS Burks Green is an architectural and engineering practice specialising in the design of industrial facilities including waste management facilities. It is the leading industrial architect in the UK and is currently working with some of the largest waste management companies in the industry.

Whilst the technology used at Eastcroft has been continuously upgraded, the visual appearance of the building has not. It is a 1970s structure that is showing its age.

The new vision for Eastcroft will transform it into a striking, modern building that is worthy of Nottingham and that will far better complement neighbouring regeneration efforts.

This will include:

- Re-cladding the facility in silver and dark grey-coloured material
- Cleaning the existing concrete facades to give it a fresh finish
- Painting the chimney in light grey and white to reduce its visual impact
- A louvered screen around the remaining equipment to the north of the plant



Proposed Aerial Perspective and Finishes

The aim is to focus on the strong building forms that exist, to give them further clarity and create visual structure to those elements that need cohesion. The design, the materials and the colours used will all combine to transform the existing Eastcroft Energy-from-Waste Facility in to a striking modern building.

The images on the following boards show how Eastcroft would look if given the go-ahead to expand.

Images of the New Proposals



Eastcroft from the South. Proposed (large), existing (small).



Eastcroft from the West. Proposed (large), existing (small).

Images of the New Proposals



Eastcroft from the North. Proposed (large), existing (small).



View of proposed Eastcroft facility from south of Lady Bay Bridge.